

$\Delta = 80^{\circ}22'$
 $R = 325'$
 $T = 274.5'$
 $L = 455.8'$

$\Delta = 9^{\circ}17'$
 $R = 800'$
 $T = 24.1'$
 $L = 48.5'$

$\Delta = 90^{\circ}$
 $R = 134.52'$
 $T = 134.52'$
 $L = 210.30'$
 NOTE: INCREASE TRUCK
 GRADE 9%

$\Delta = 84^{\circ}43'$
 $R = 122.54'$
 $T = 122.54'$
 $L = 190.90'$

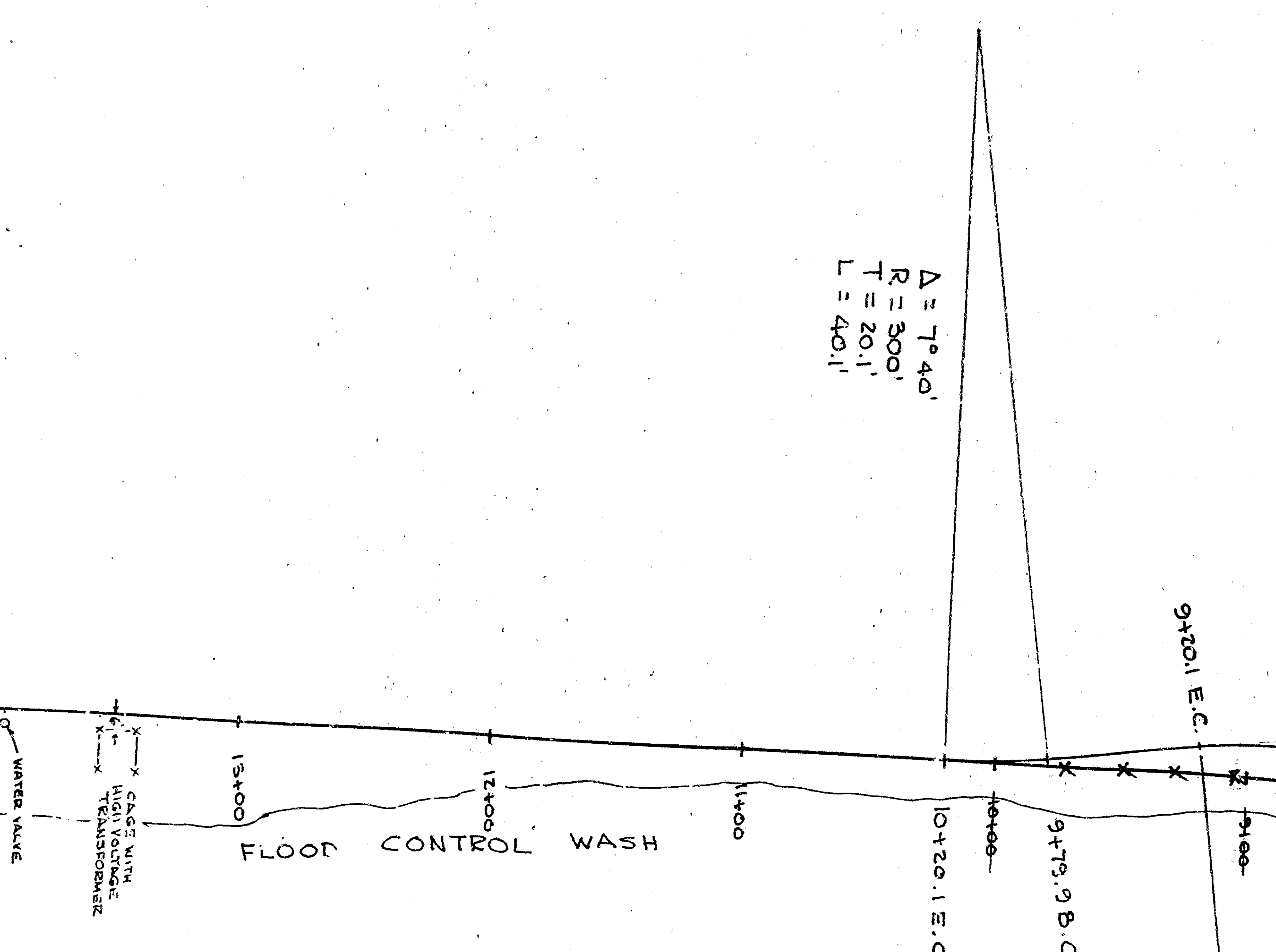
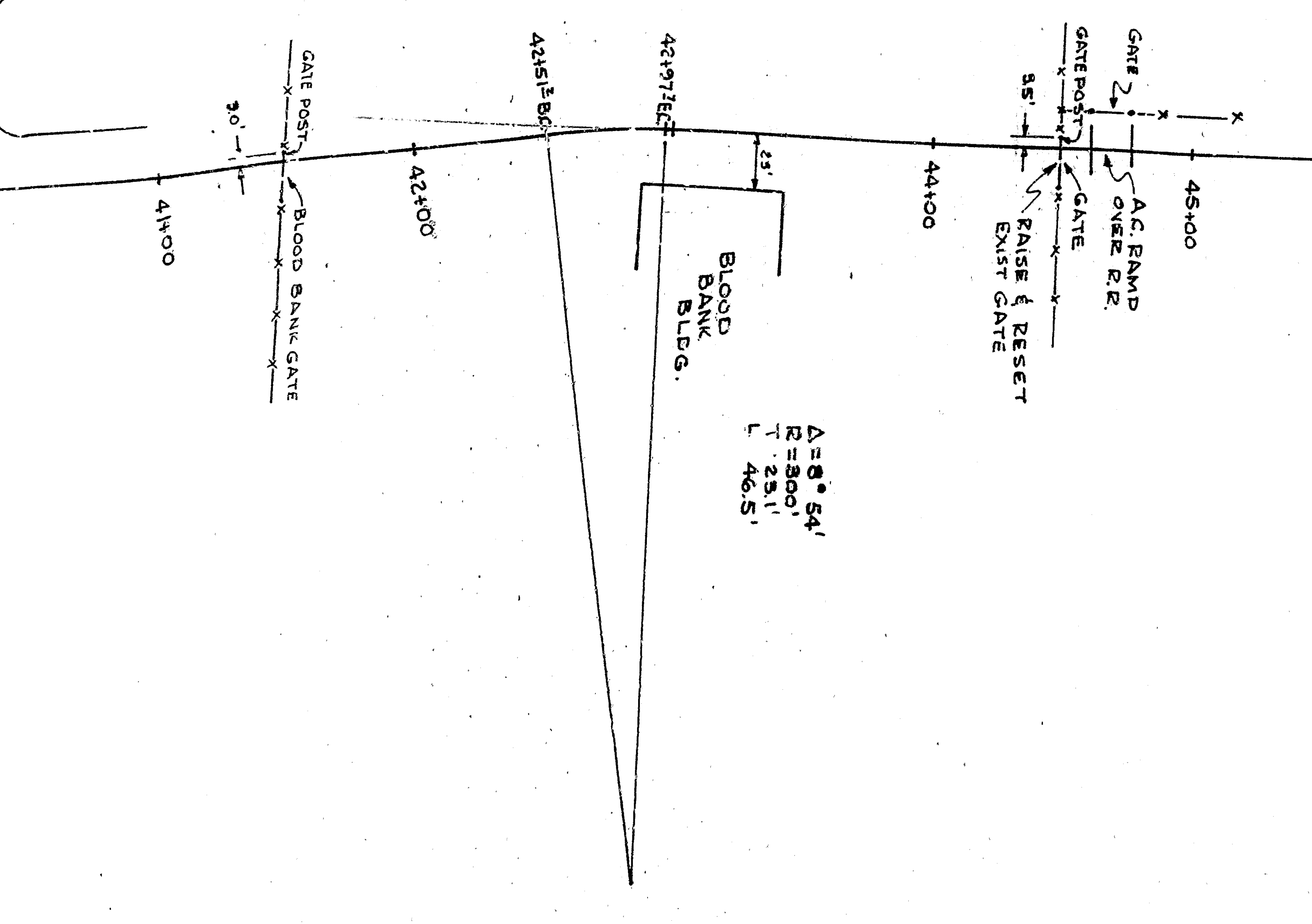
$\Delta = 6^{\circ}$
 $R = 300'$
 $T = 15.72'$
 $L = 31.32'$

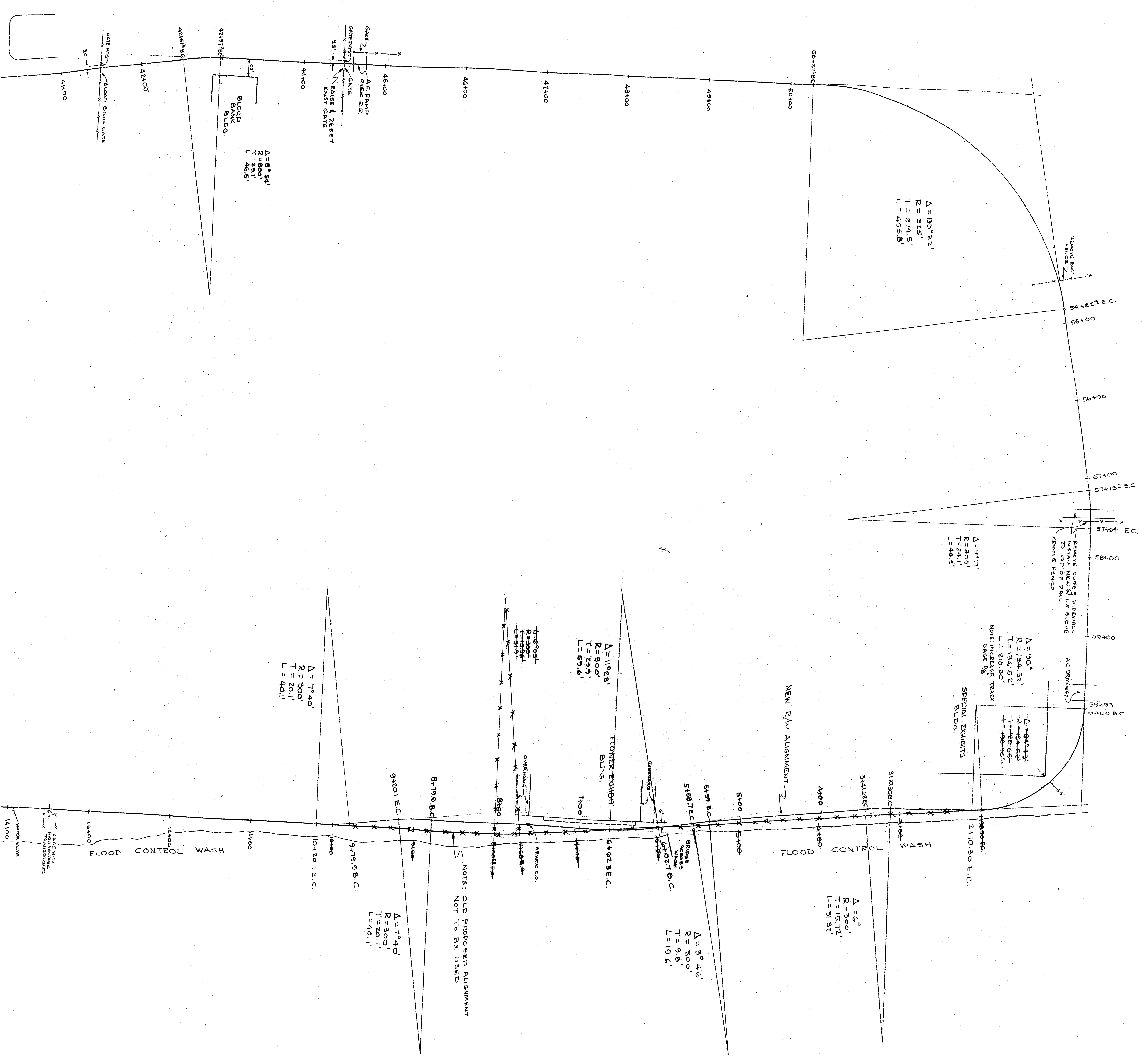
$\Delta = 30^{\circ}46'$
 $R = 300'$
 $T = 9.8'$
 $L = 19.6'$

$\Delta = 7^{\circ}40'$
 $R = 300'$
 $T = 20.1'$
 $L = 40.1'$

$\Delta = 110^{\circ}23'$
 $R = 800'$
 $T = 299.7'$
 $L = 59.6'$

NOTE: OLD PROPOSED ALIGNMENT
 NOT TO BE USED





$\Delta = 80^{\circ}22'$
 $R = 325'$
 $T = 274.5'$
 $L = 455.8'$

$\Delta = 91^{\circ}17'$
 $R = 800'$
 $T = 241.1'$
 $L = 481.5'$

$\Delta = 90^{\circ}$
 $R = 194.52'$
 $T = 134.52'$
 $L = 210.30'$
 NOTE: INCREASE TRUCK
 GRADE 1/8"

$\Delta = 84^{\circ}43'$
 $R = 122.58'$
 $T = 100.65'$
 $L = 190.90'$

$\Delta = 6^{\circ}$
 $R = 300'$
 $T = 15.72'$
 $L = 31.32'$

$\Delta = 30^{\circ}46'$
 $R = 300'$
 $T = 98.1'$
 $L = 191.6'$

$\Delta = 110^{\circ}23'$
 $R = 800'$
 $T = 299.1'$
 $L = 597.6'$

$\Delta = 7^{\circ}40'$
 $R = 800'$
 $T = 20.1'$
 $L = 40.1'$

$\Delta = 7^{\circ}40'$
 $R = 800'$
 $T = 20.1'$
 $L = 40.1'$

NOTE: OLD PROPOSED ALIGNMENT NOT TO BE USED

